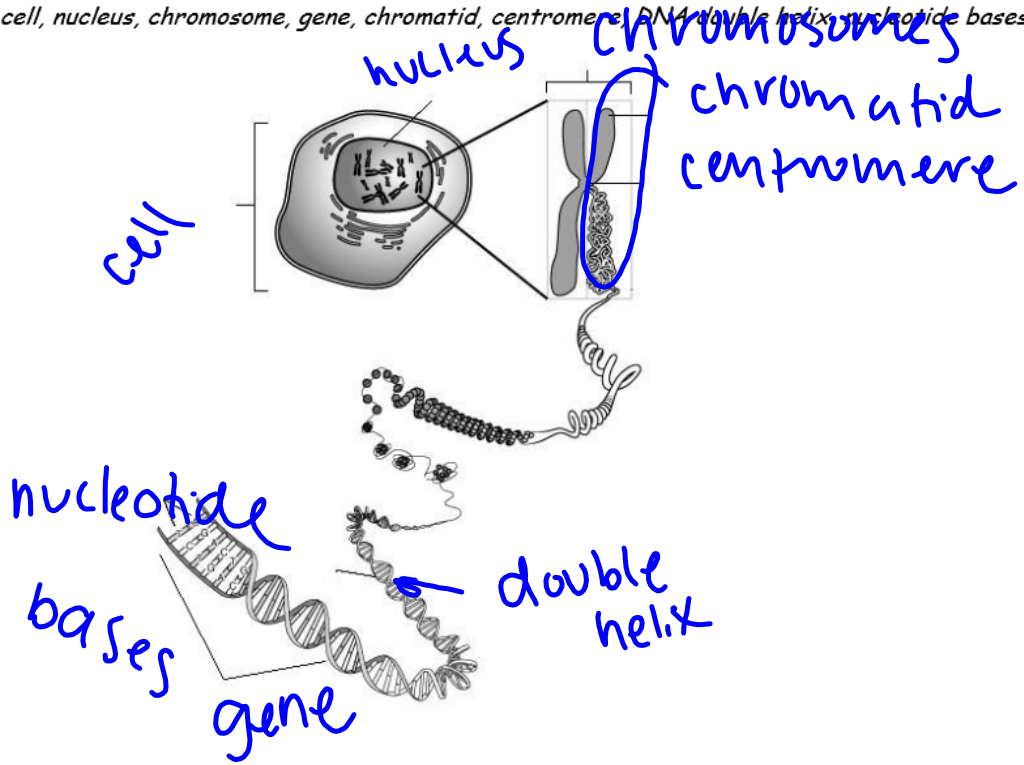


Name _____ Date _____ Page _____

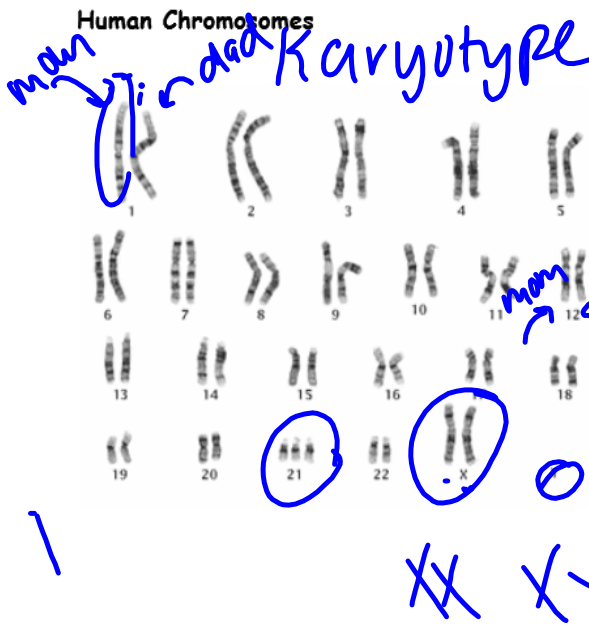
Chromosome Diagram

Label the diagram with the appropriate terms:

cell, nucleus, chromosome, gene, chromatid, centromere, DNA double helix, nucleotide bases



Human Chromosomes



This is a 'stain' of the 23 pairs of chromosomes for a human. Chromosomes are found in the nucleus of every cell except for mature blood cells. These chromosomes could all be packed into the space smaller than the point of a needle! These are strands of coiled DNA.

1. Do these chromosomes belong to a male or a female? **female**
2. How can you tell the gender?
3. What is unique about this set of chromosomes?